



MacBook Pro 13" Unibody Mid 2009 Hard Drive Replacement

Replace the hard drive in your MacBook Pro 13" Unibody Mid 2009.

Written By: Walter Galan

INTRODUCTION

When replacing your hard drive, you must transfer the four locating pins (removed with a T6 screwdriver) from the old hard drive to the new one.

TOOLS:

- [Phillips #00 Screwdriver](#) (1)
- [Spudger](#) (1)
- [T6 Torx Screwdriver](#) (1)

PARTS:

- [1 TB SSD Hybrid 2.5" Hard Drive](#) (1)
This kit contains the drive and all tools needed.
- [500 GB SSD Hybrid 2.5" Hard Drive](#) (1)
This kit contains the part and tools needed.
- [256 GB Solid State Drive](#) (1)
This kit contains the drive and all tools needed.
- [128 GB Solid State Drive](#) (1)
This kit contains the part and all tools needed.
- [Universal Drive Adapter](#) (1)
- [MacBook Pro 13" Unibody Hard Drive Bracket](#) (1)

Step 1 — Lower Case



Remove the following 10 screws securing the lower case to the MacBook Pro 13" Unibody:

- Seven 3 mm Phillips screws.

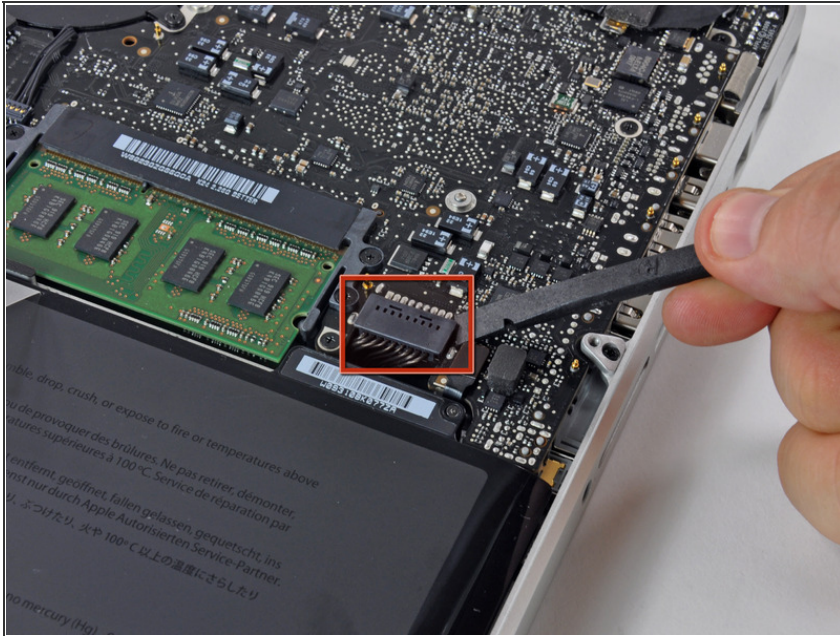
- Three 13.5 mm Phillips screws.

Step 2



Slightly lift the lower case and push it toward the rear of the computer to free the mounting tabs.

Step 3 — Battery



For precautionary purposes, we advise that you disconnect the battery connector from the logic board to avoid any electrical discharge.

Use the flat end of a spudger to lift the battery connector up out of its socket on the logic board.

Step 4 — Hard Drive



Remove two Phillips screws securing the hard drive bracket to the upper case.

These screws are captive to the hard drive bracket.

Step 5



Lift the the retaining bracket out of the upper case.

Step 6



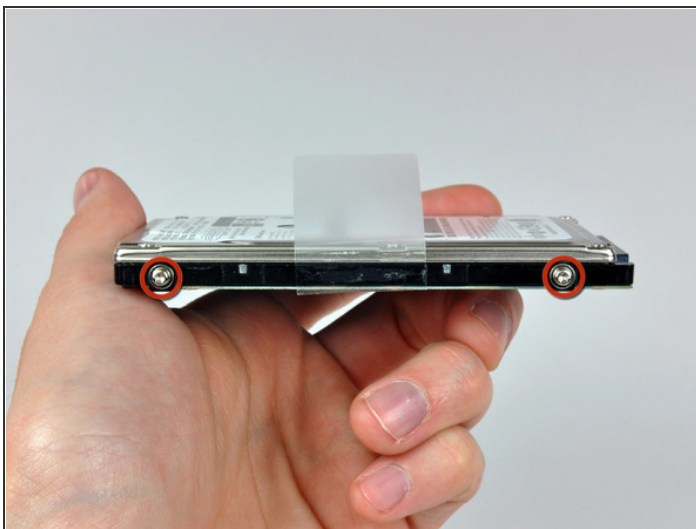
Lift the hard drive by its pull tab and pull it out of the chassis, minding the cable attaching it to the computer.

Step 7



Remove the hard drive cable by pulling its connector straight away from the hard drive.

Step 8 — Hard Drive



Remove the two T6 Torx screws from each side of the hard drive (four screws total). You'll need to transfer these screws to your new hard drive if you're changing drives. If you are installing a new hard drive, we have an [OS X install guide](#) to get you up and running.

To reassemble your device, follow these instructions in reverse order.

