



MacBook Pro 15" Core Duo Model A1150 Hard Drive Replacement

Written By: iRobot

INTRODUCTION

[video: http://www.youtube.com/watch?v=K_qQrL2SGrI]

You can install hard drives up to 9.5mm thick.

TOOLS:

- [Phillips #00 Screwdriver](#) (1)
- [Spudger](#) (1)
- [T6 Torx Screwdriver](#) (1)

PARTS:

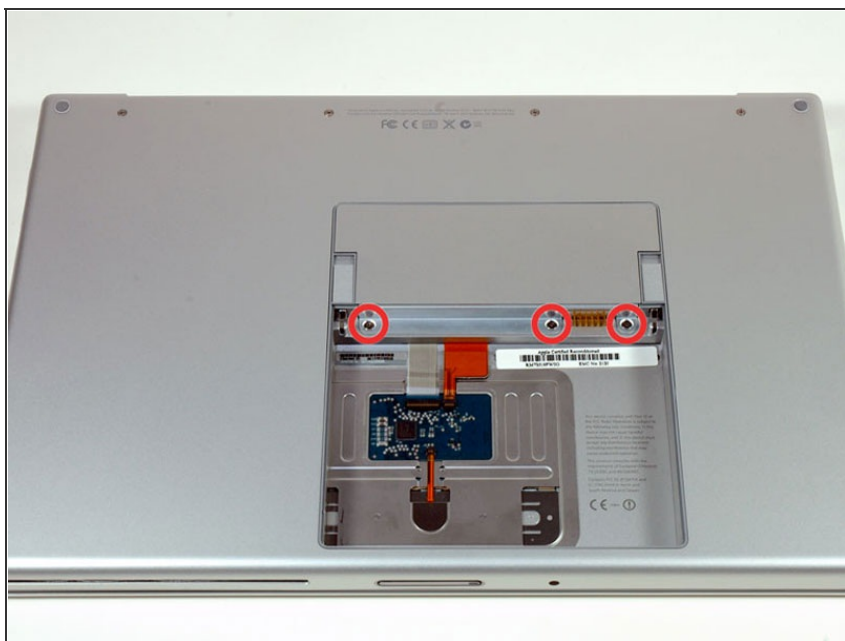
- [500 GB 5400 RPM 2.5" Hard Drive](#) (1)
- [500 GB 7200 RPM 2.5" Hard Drive](#) (1)
- [750 GB 7200 RPM Seagate SATA Hard Drive \(New\)](#) (1)
- [Universal Drive Adapter](#) (1)

Step 1 — Battery



- Use your fingers to push both battery release tabs away from the battery, and lift the battery out of the computer.

Step 2 — Memory Door



- Remove the three identical Phillips screws from the memory door.
- ☑ Make sure to record which sets of screws came from where. This will help when re-assembling.

Step 3



- Lift the memory door up enough to get a grip on it, and slide it toward you, pulling it away from the casing.

Step 4 — Upper Case



- Remove the two Phillips screws in the battery compartment near the latch.

Step 5



- Remove the following 6 screws:
 - Two 10 mm T6 Torx screws on either side of the RAM slot.
 - Four 14.5 mm Phillips screws along the hinge.

Step 6



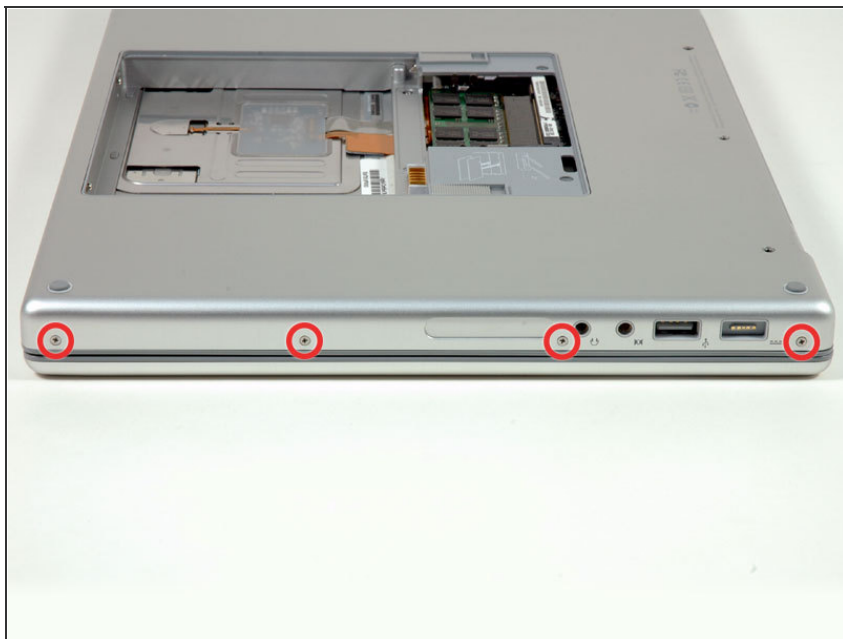
- Remove the four Phillips screws on the port side of the computer.

Step 7



- Rotate the computer 90 degrees and remove the two Phillips screws from the rear of the computer.

Step 8



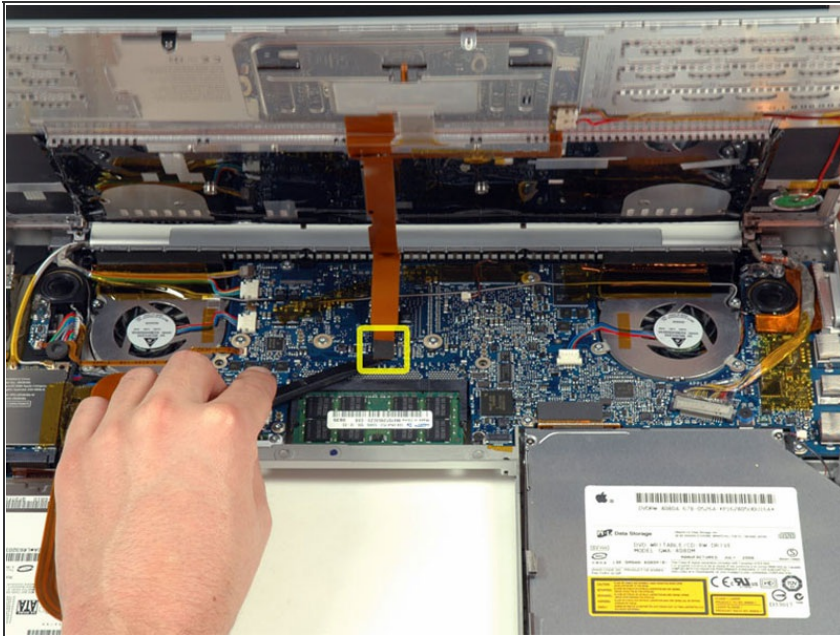
- Rotate the computer 90 degrees again and remove the four Phillips screws from the side of the computer.

Step 9



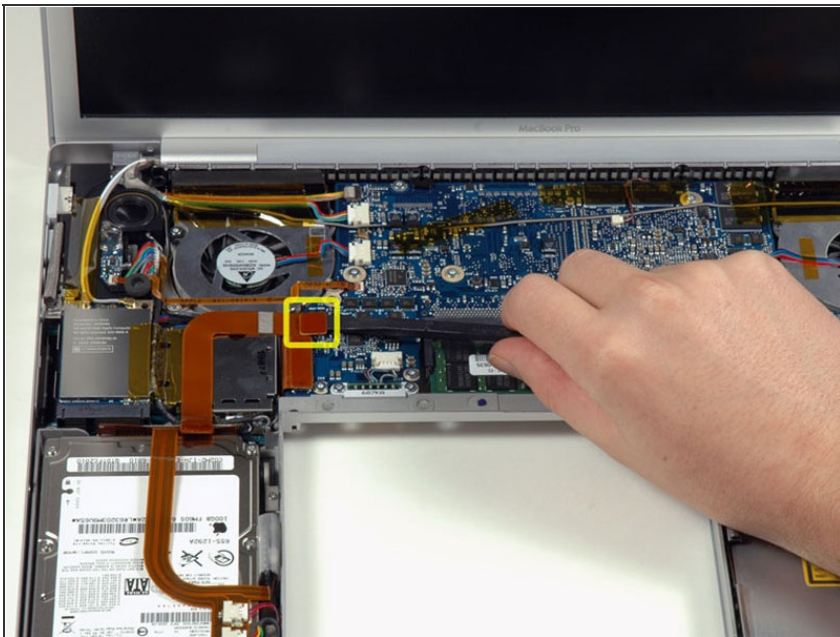
- ⓘ Do not yank the upper case off quickly. The case is attached to the logic board via a ribbon cable.
- Lift up at the rear of the case and work your fingers along the sides, freeing the case as you go. Once you have freed the sides, you may need to rock the case up and down to free the front of the upper case. This stage can be quite tricky. Over the DVD reader are 4 tabs set back which pull out vertically.
- Note that the two small tongues on the left hand front of the upper case may bend while you remove the upper case. When re-installing, you may need to bend them back to fit in the grooves in the lower case.

Step 10



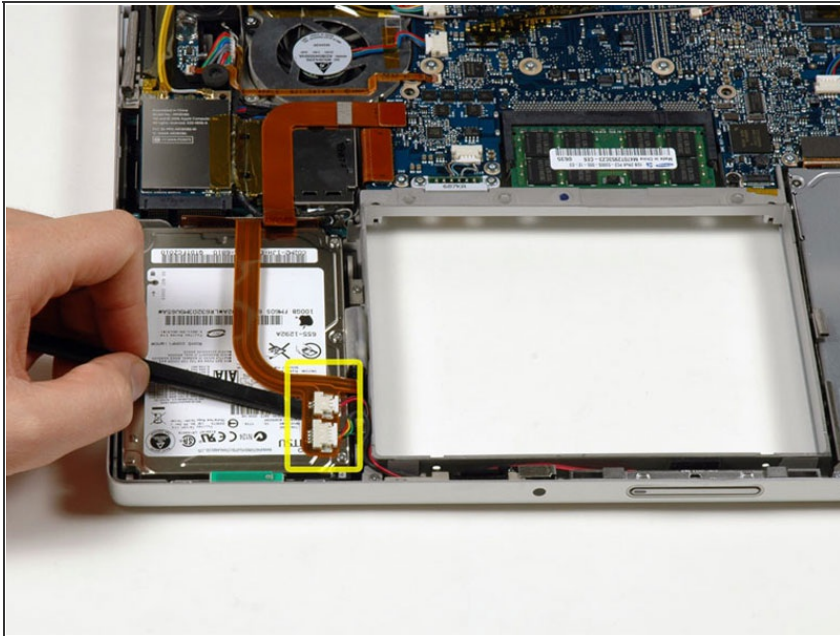
- Disconnect the trackpad and keyboard ribbon cable from the logic board, removing tape as necessary.
- Remove the upper case.

Step 11 — Hard Drive



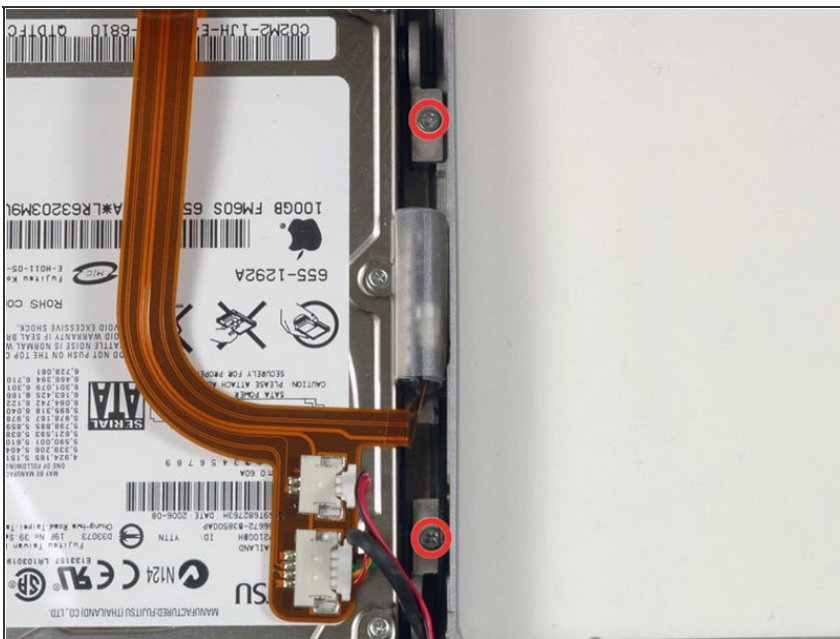
- Disconnect the orange hard drive ribbon cable from the logic board.

Step 12



- Use a spudger to carefully loosen the adhesive securing the sleep light and IR sensor connectors to the top of the hard drive.

Step 13



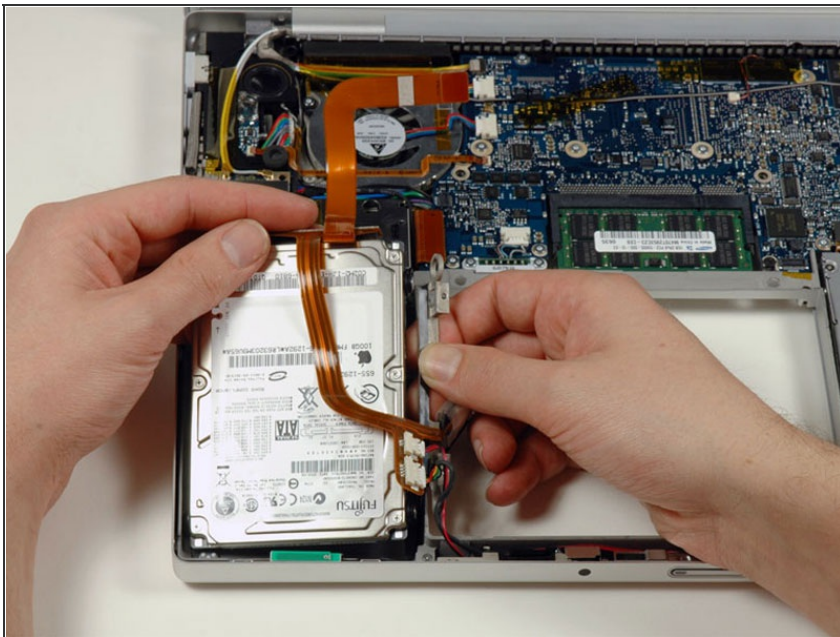
- Remove the two silver Phillips screws securing the hard drive retaining bracket to the lower case.
- ⓘ In some machines these screws may have T6 Torx heads.

Step 14



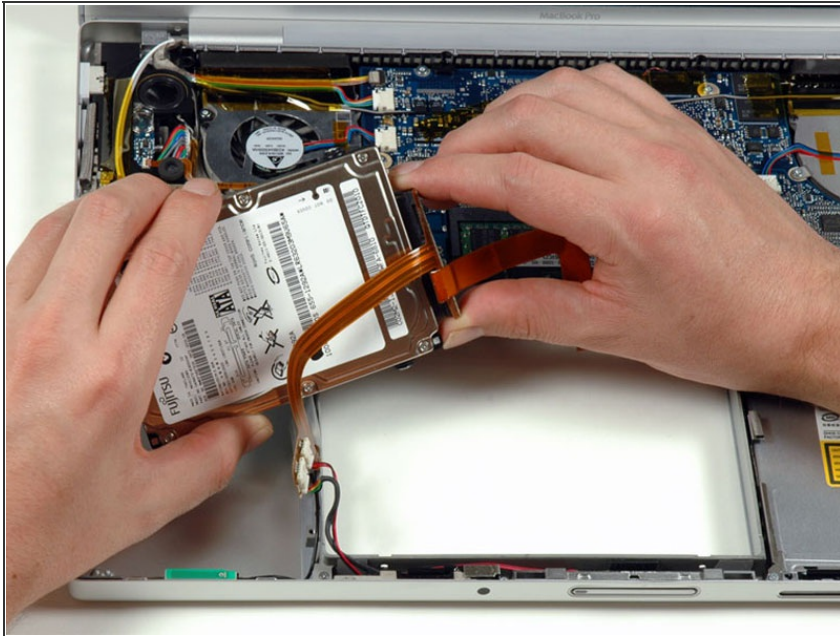
- Slide the Bluetooth board out of its slot next to the hard drive. The Bluetooth board is still connected to the orange hard drive cable, so don't try to remove it entirely from the computer.

Step 15



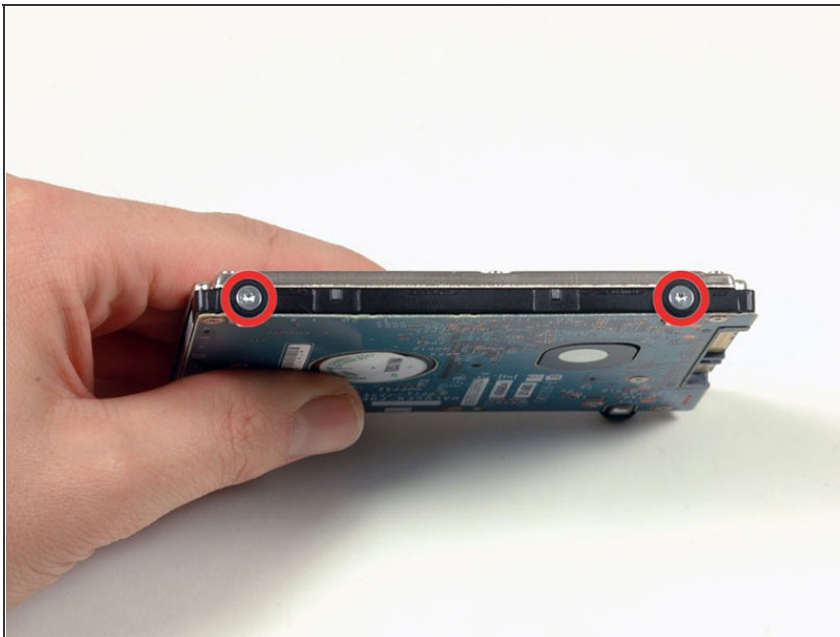
- Lift the hard drive up with one hand and use your other hand to remove the retaining bracket from the side of the hard drive.

Step 16



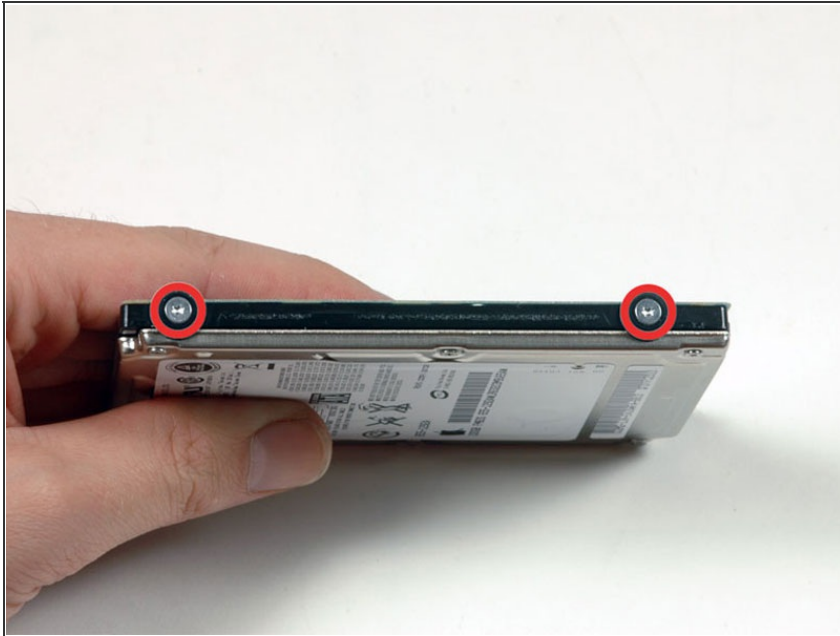
- Disconnect the orange hard drive cable.
- ★ After installing the new hard drive, make sure the vent hole (on top) is not covered by the orange ribbon cable.

Step 17 — Hard Drive



- Remove the two silver T6 Torx screws and black rubber bumpers from the right side of the hard drive.
- i You'll need to transfer these screws and bumpers to your new hard drive if you're changing drives.

Step 18



- Remove the two black T6 Torx screws and black rubber bumpers from the left side of the hard drive.

✦ You'll need to transfer these screws and bumpers to your new hard drive if you're changing drives.

i If you are installing a new hard drive, we have an [OS X install guide](#) to get you up and running.

To reassemble your device, follow these instructions in reverse order.

This document was last generated on 2015-04-25 08:56:58 PM.