



MacBook Core Duo Hard Drive Replacement

MacBook Core Duo hard drive replacement or upgrade.

Written By: iRobot

INTRODUCTION

[video: <http://www.youtube.com/watch?v=k22795agwmw>]

Replace or upgrade your MacBook Core Duo's hard drive with a new SATA hard drive or SSD up to 9.5mm thick. A new drive can give you extra storage space and also increase your MacBook's speed.

TOOLS:

- [Coin](#) (1)
- [Phillips #00 Screwdriver](#) (1)
- [T8 Torx Screwdriver](#) (1)

PARTS:

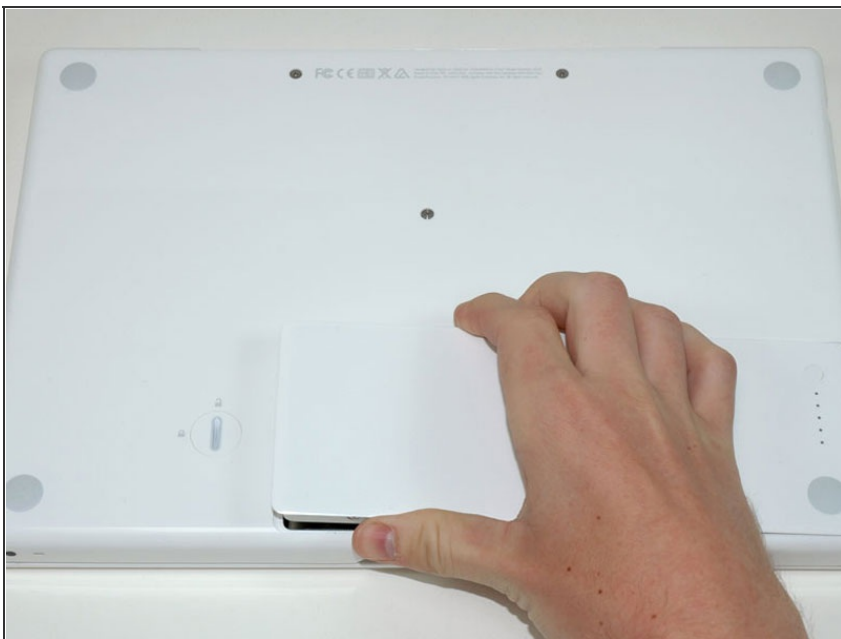
- [1 TB SSD Hybrid 2.5" Hard Drive](#) (1)
This kit contains the drive and all tools needed.
- [500 GB SSD Hybrid 2.5" Hard Drive](#) (1)
This kit contains the drive and all tools needed.
- [256 GB Solid State Drive](#) (1)
This kit contains the drive and all tools needed.
- [128 GB Solid State Drive](#) (1)
This kit contains the drive and all tools needed.
- [MacBook Hard Drive Bracket](#) (1)

Step 1 — Battery



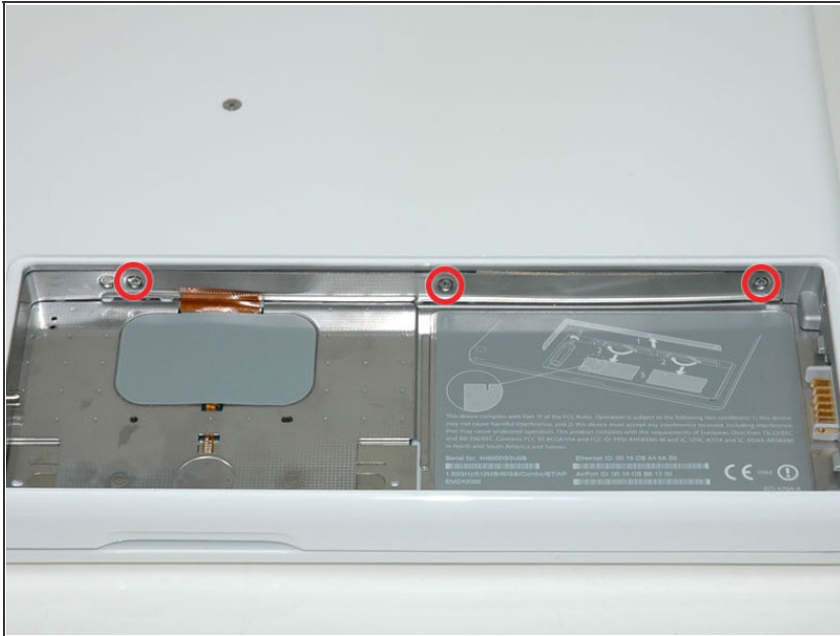
- Use a coin to rotate the battery-locking screw 90 degrees clockwise.

Step 2



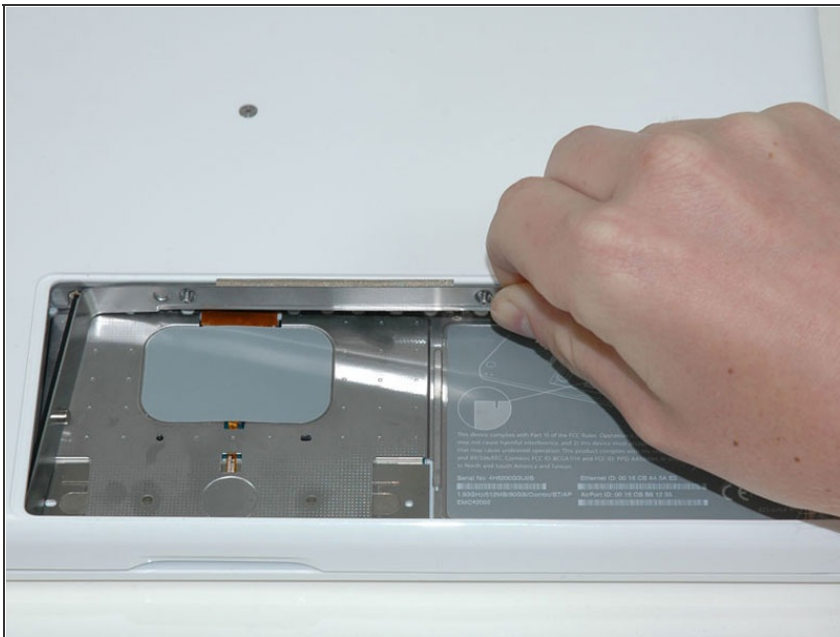
- Lift the battery out of the computer.

Step 3 — Memory Cover



- Remove the three evenly-spaced Phillips screws from along the rear wall of the battery compartment.
- ✦ The screws are captive to the metal memory cover.
- ✦ When replacing the battery casing, use a spudger to re-insert the foam cushioning behind the rear wall for proper battery spacing.

Step 4



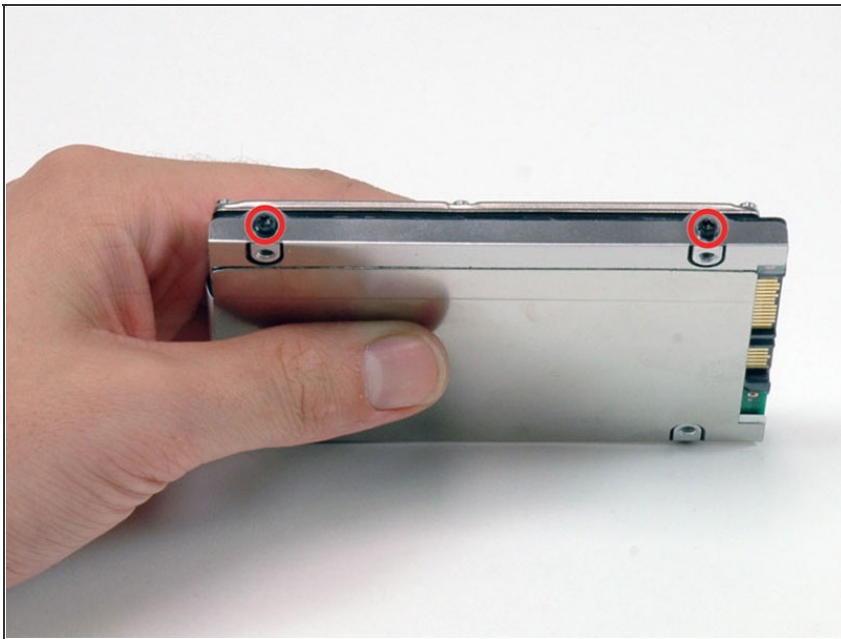
- Lift up on L-shaped memory cover, slide it to the right, and lift it out of the computer.

Step 5 — Hard Drive



- Grasp the white plastic tab attached to the hard drive and pull it to the right, removing the hard drive from the computer.
- ✦ The hard drive goes back into its compartment with the label facing down.

Step 6 — Hard Drive



- Remove the two black T8 Torx screws securing the silver bracket to the hard drive.

Step 7



- Rotate the hard drive and remove the two black T8 Torx screws on the other side of the drive.

Step 8



- Lift the silver metal hard drive bracket off of the hard drive.
- ★ You'll need to transfer this metal bracket to your new hard drive.
- i If you are installing a new hard drive, we have an [OS X install guide](#) to get you up and running.

To reassemble your device, follow these instructions in reverse order.

This document was last generated on 2015-05-06 03:58:24 AM.