



iPhone 5 Battery Replacement

Remove the battery from your iPhone 5

Written By: Andrew Optimus Goldberg

INTRODUCTION

Bring life back to your iPhone 5 with a new battery.

[video: <https://www.youtube.com/watch?v=6ogE8USs2Vs>]



TOOLS:

- [Phillips #000 Screwdriver](#) (1)
- [Plastic Opening Tools](#) (1)
- [Small Suction Cup](#) (1)
- [P2 Pentalobe Screwdriver iPhone](#) (1)
- [Anti-Static Project Tray](#) (1)



PARTS:

- [iPhone 5 Replacement Battery](#) (1)
This includes the battery and all tools needed.
- [iPhone 5 Replacement Battery](#) (1)

Step 1 — Display Assembly



- If your display glass is cracked, keep further breakage contained and prevent bodily harm during your repair by taping the glass.
- Lay overlapping strips of clear packing tape over the iPhone's display until the whole face is covered.
 - This will keep glass shards contained and provide structural integrity when prying and lifting the display.
- Wear safety glasses to protect your eyes from any glass shaken free during the repair.



Step 2




- Before disassembling your iPhone, be sure it is powered off.
- Remove the two 3.6 mm Pentalobe screws next to the Lightning connector.



Step 3 — iSclack Opening Procedure



- The next two steps demonstrate using the [iSclack](#), a great tool for safely opening the iPhone 5 that we recommend for anyone doing more than one repair. **If you aren't using the iSclack, skip to step 5.** 
- Close the handle on the iSclack, opening the suction-cup jaws.
- Place the bottom of your iPhone in between the suction cups, against the plastic depth gauge.
 - The top suction cup should rest just above the home button.
- Open the handles to close the jaws of the iSclack. Center the suction cups and press them firmly onto the top and bottom of the iPhone.



Step 4



- Hold onto your iPhone securely and close the handle of the iSclack to separate the suction cups, pulling the front panel up from the rear case.
- The iSclack is designed to safely open your iPhone just enough to separate the pieces, but not enough to damage the home button cable.
- Peel the two suction cups off your iPhone.
- **Skip the next three steps and continue on step 7.**




Step 5



- Press a suction cup onto the screen, just above the home button.
- Be sure the cup is completely on the screen to get a tight seal. 
- If you're opening an iPhone with cracked glass, neatly lay a couple strips of packing tape across the front and squeeze out as many bubbles as you can. This will give the suction cup a surface to grab, and minimize the spread of broken glass. 

Step 6



- Make sure the suction cup is firmly attached to the front panel assembly. 
- While holding the iPhone down with one hand, pull up on the suction cup to slightly separate the front panel assembly from the rear case.
- Take your time and apply firm, constant force. The display assembly is a much tighter fit than most devices. 
- With a plastic opening tool, begin to gently pry the rear case down, away from the display assembly, while you pull up with the suction cup.
- There are several clips attaching the front panel assembly to the rear case, so you may need to use a combination of the suction cup and plastic opening tool to free the front panel assembly. 

Step 7



- Continue to pry up around the sides of the front panel assembly, detaching the clips along the left and right side.

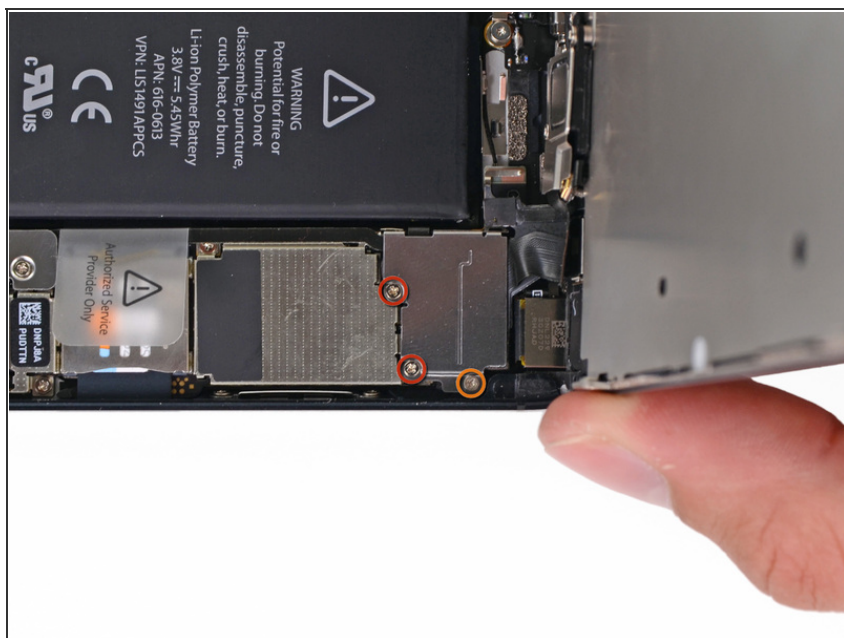
Step 8



- Do not try to completely remove the front panel assembly from the rear case, as there are several ribbon cables still attached at the top of the iPhone.
- Once the clips have been released on the bottom and sides of the front panel assembly, pull the bottom of the assembly away from the rear case.
- Lift the front panel assembly slowly up to about 90 degrees from the rear case.



Step 9



- Remove the following screws securing the front panel assembly cable bracket to the logic board:
 - Two 1.2 mm Phillips screws
 - One 1.6 mm Phillips screw
- This screw tends to not be attracted to a magnetized screwdriver. Take care not to lose it when removing, and make sure it gets back into the right place—a magnetized screw may interfere with the compass.



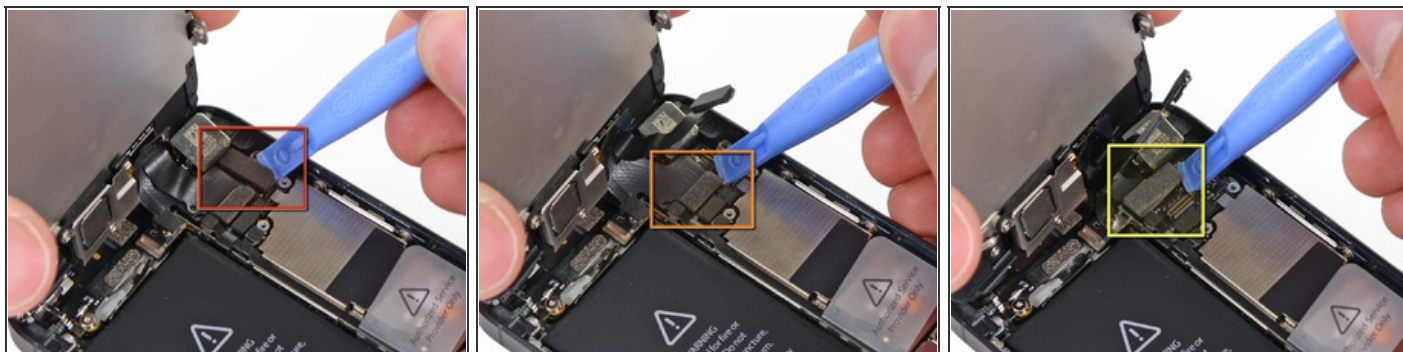
Step 10



- Remove the front panel assembly cable bracket from the logic board.
- User note: To ensure correct installation, make sure you clip the small hooks of the bracket under and then lower towards the outside of the phone.



Step 11



- Use a plastic opening tool to disconnect the three front panel assembly cables:

- Front-facing camera and sensor cable
- LCD cable
- Digitizer cable

- When reassembling your phone, The LCD cable may pop off the connector.

This can cause white lines, or nothing at all to appear when powering your phone back on. If that happens, simply reconnect the cable and power cycle your phone. The best way to power cycle your phone is to [disconnect and reconnect the battery](#).



Step 12



- Remove the front panel assembly from the rear case.

Step 13 — Battery



- Remove the following two screws securing the metal battery connector bracket to the logic board:

- One 1.8 mm Phillips screw
- One 1.6 mm Phillips screw

Step 14



- Remove the metal battery connector bracket from the iPhone.

Step 15



- Use a plastic opening tool to gently pry the battery connector up from its socket on the logic board.
- Be very careful to only pry up on the battery connector and not the socket on the logic board. If you pry up on the logic board socket, you may break the connector entirely.



Step 16



- *It may be possible to remove the battery simply by pulling on the plastic pull-tab. A slow continual pull seems to work best. If this is insufficient, proceed with the prying outlined in this step.*





- Use the plastic opening tool to **gently** pry the battery up, **only at the three points shown**. Prying anywhere else, especially near the clear plastic pull tab, **may result in damage to the logic board**.
- Again, do not pry too hard, and only in the locations shown; well above and below the clear plastic pull tab. Otherwise, you may deform or puncture the battery or damage the logic board.
- Be careful when prying at the top of the battery. Do not insert the opening tool more than 2 mm under the battery or you risk severing the volume control cables.



Step 17



- If necessary, use the exposed clear plastic pull tab to peel the battery off the adhesive securing it to the iPhone. 
- Remove the battery.
- During reassembly, make sure the battery is seated firmly against the rear case. This will prevent any damage to other components when reinstalling the front panel assembly. 

To reassemble your device, follow these instructions in reverse order.

This document was last generated on 2015-04-16 12:58:03 PM.